

Harding MCH lifeboat

This totally enclosed lifeboat is the Tanker Version, designed for ships or offshore installations where there is risk of burning oil and dangerous gases. It may be launched by a 20 metre vertical free fall, fully loaded, with all occupants held by seat belts.

The occupants must wear seat-belts at all times to provide the ballast and centre of gravity needed to right the boat if it capsizes in rough seas. The boat is designed to roll through 360 without affecting engine operation. Its hatches can be hermetically sealed. Special features include a compressed-air passenger breathing system and a diesel-driven seawater pump to spray the entire boat for cooling, allowing it to pass through burning oil on the sea for a distance of one nautical mile.

The Harding lifeboat and davit were commissioned here at the Museum in 1993. The lifeboat is owned and operated by the Sydney Institute of TAFE Marine Technology Centre. It is regularly used to train seafarers in using survival craft, to meet international requirements.

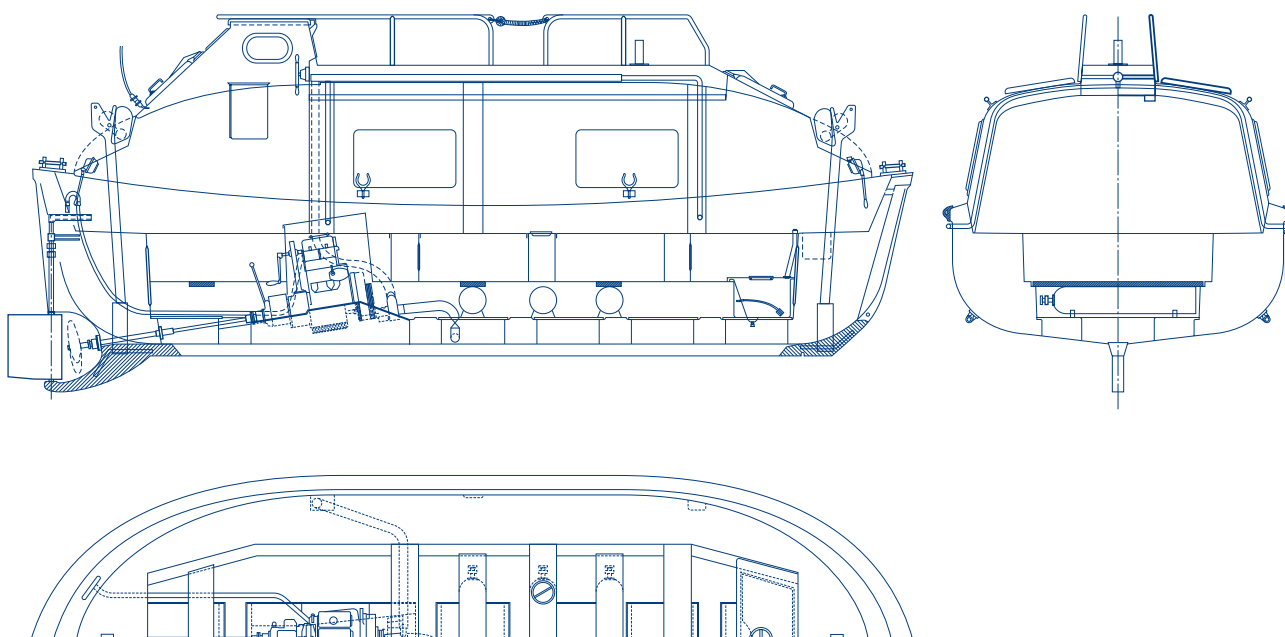
Sydney TAFE training boat



Specifications

Built 1984

Capacity	40 people
Length	7.46 m
Breadth	2.9 m
Draught	1.15 m
Weight	3.6 tonnes
Builder	Harding AS, Rosendal, Norway
Construction	Glass-reinforced fire retardant polyester (GRP) whole-moulded in one integral unit
Machinery	2 cylinder SABB diesel motor 212 kW (30 hp) 130 litre fuel capacity



Front: Harding Safety Lifeboat in action Reproduced courtesy Umoe Schat-Harding AS Norway
Above: Plans reproduced courtesy Umoe Schat-Harding AS Norway