

MB 172 Epic Lass

Naval motor launch

*Motor Boat 172** was built by the Royal Australian Navy as a naval officers' launch at the Garden Island Naval Dockyard, Sydney in 1937. *MB 172* spent much of its working life in Darwin, mainly transporting officers and VIPs from ship to shore and around the harbour. Elegant timber launches such as this were replaced by fibreglass and aluminium general purpose utility boats.

When *MB 172* was decommissioned, it was stored ashore for many years and stripped of all reusable equipment. It was later transferred from the Royal Australian Navy to the Australian National Maritime Museum. In the late 1980s apprentice shipwrights at Australian Defence Industries rebuilt the launch at its yard in Ryde, New South Wales and fabricated fittings at its Rosebery foundry.

The launch was named *Epic Lass* in recognition of sponsorship from Taubmans Industries Ltd (Epiglass Australia) which supplied marine paints and varnishes. It is now used as a work boat for transporting guests and Museum personnel on Sydney Harbour.

* *MB 172* is the official Navy pennant number

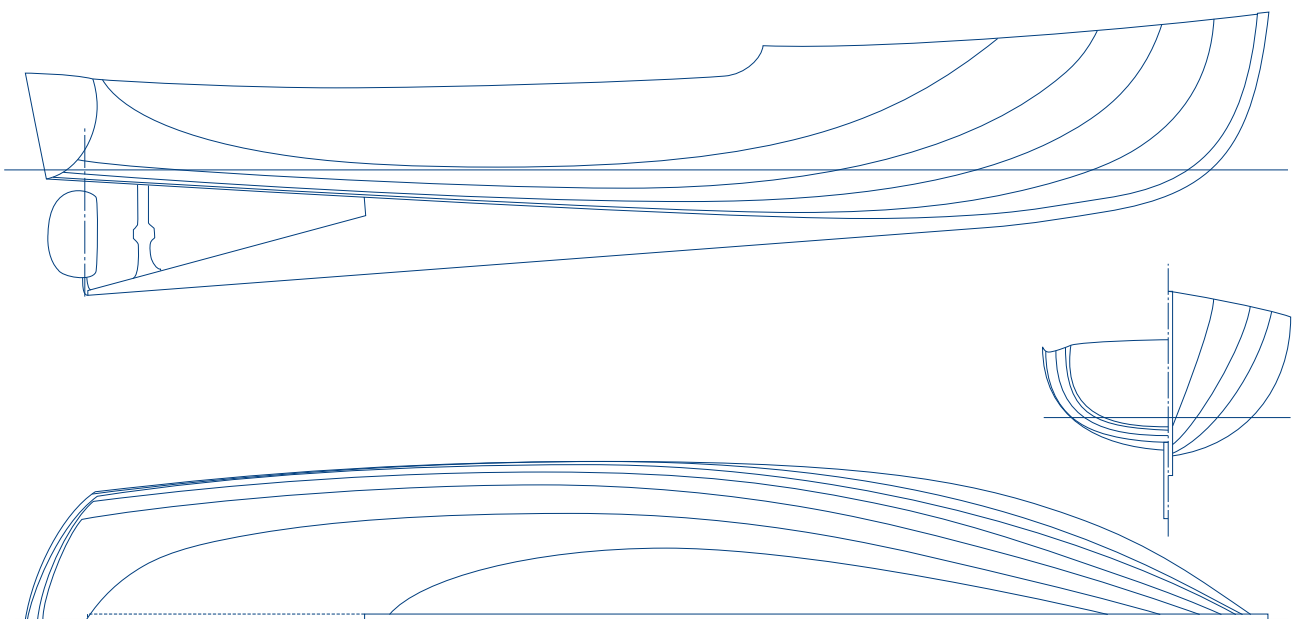


Specifications

Built 1937

Length	11.88 m
Breadth	3.48 m
Draught	1.22 m
Displacement	10 tonnes
Construction	Carvel, spotted gum planking and frames, teak cabin
Engine	6-cylinder Volvo Penta TAMD 41 diesel, 125 kW

ANMM Collection



Front: MB 172 on Sydney Harbour Photographer ANMM