

## HOW TO MAKE A POLAR PALOOZA SNOW DOME

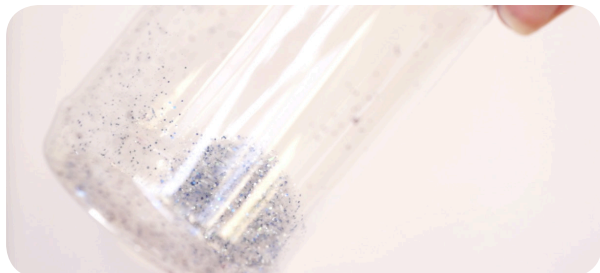
### MATERIALS

- plastic jar (in your kit)
- Antarctic creature model (in your kit)
- glitter (in your kit)
- Hot glue or strong PVA craft glue or Sticky tape

### INSTRUCTIONS



1. Choose which creature you want to use. Take the lid of your jar and place it on a flat surface with the raised edges facing up. Hot glue the feet of the model so it is standing in the centre of the lid. Leave this to dry completely. ( **If you don't have hot glue you could also use sticky tape. If you use PVA glue-allow it to dry fully overnight before you add water**)



2. Sprinkle a small amount of glitter into your jar (maximum 1 teaspoon! A little bit will go a long way). Fill your jar up as high as you can with water.



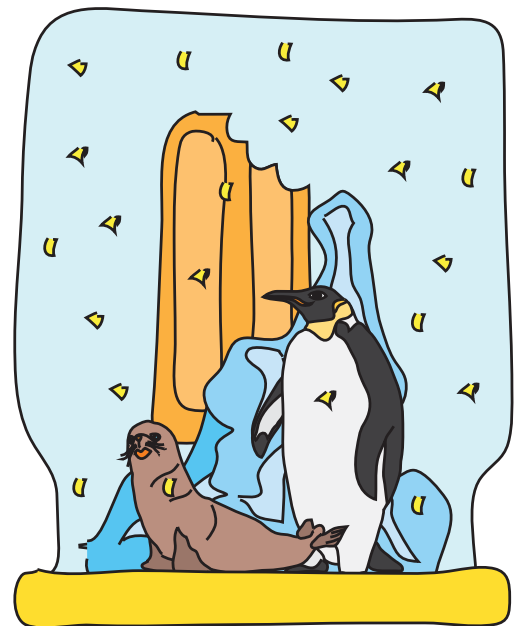
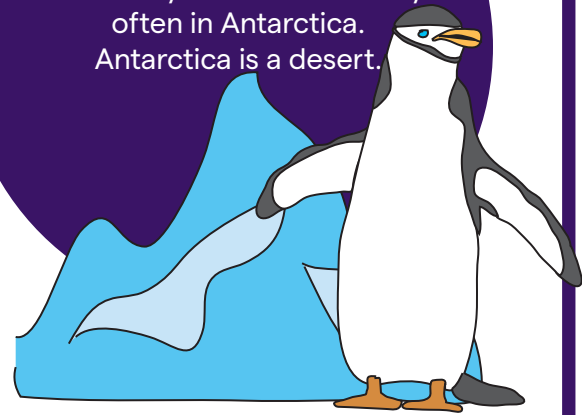
3. Push the lid down onto your jar and give it a twist in a clockwise direction to seal the jar. Stop twisting as soon as the lid feels like it is on. Give it a shake to test the lid is secure and wipe away any excess water that dribbles out with a cloth.

\*\*Don't twist the lid once it is sealed as this will break the seal. We've included a spare lid in your pack, in case you make a mistake.

Enjoy the sparkly snow-dome show!\*

### DID YOU KNOW?

It actually doesn't snow very often in Antarctica. Antarctica is a desert.



\* Recycle your dome- Once you are finished with the snow dome these jars can be washed and reused for storing craft supplies, sequins, beads, paints, pins and other items around the home.

**FOR VIDEO INSTRUCTIONS AND MORE  
SCAN THE QR CODE ON THE PACK  
OR VISIT [SEA.MUSEUM/CREATIVE-KITS](https://www.sea.museum/creative-kits)**