

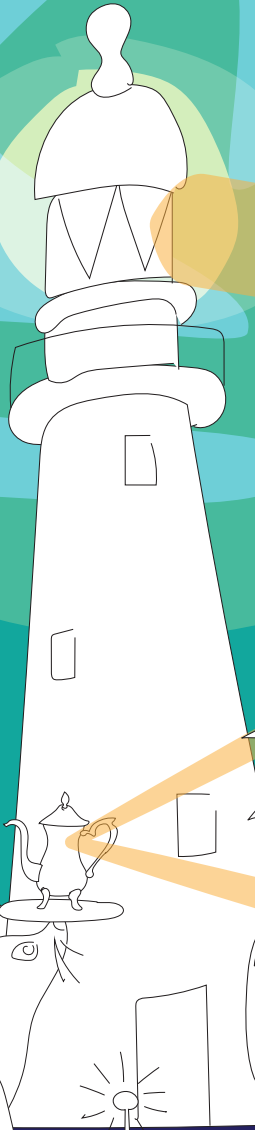
# MUSEUM

Signals  
Activities

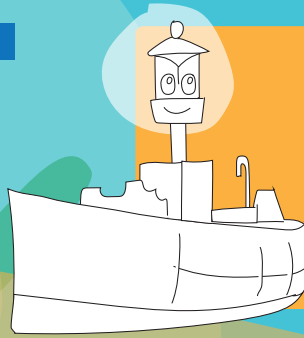
Kids

Summer 2019/20

CAPE BOWLING GREEN LIGHTHOUSE

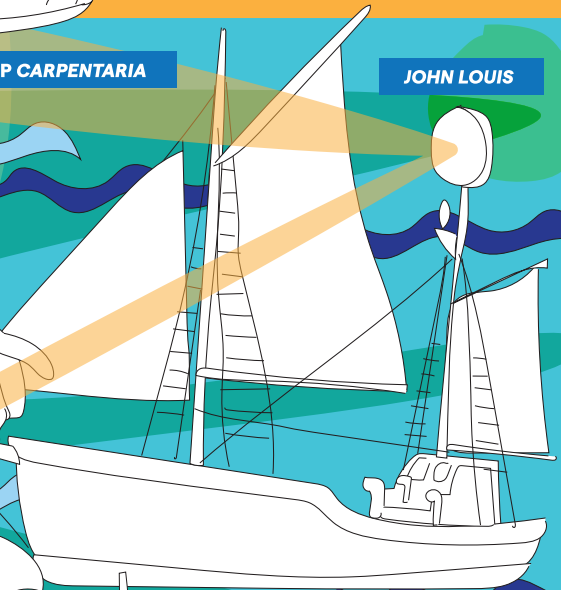


Australia has over 37,000 kilometres of coastline and shipwrecks were common in Australia's early colonial history. Many lighthouses were built in response to shipwrecks, to protect ships and sailors from dangerous shallow waters, headlands and reefs. Lightships were placed in places where a lighthouse could not be constructed.



LIGHTSHIP CARPENTARIA

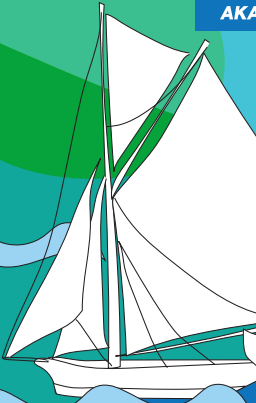
JOHN LOUIS



LITTLE PENGUIN



AKARANA



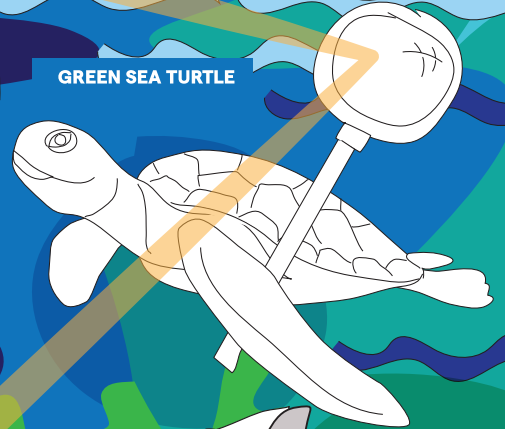
TU DO



BAILEY



GREEN SEA TURTLE



AUSTRALIAN FUR SEAL



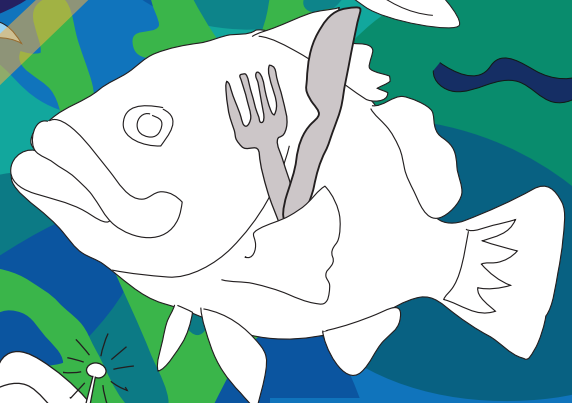
## Harbour Hoots

Take a trip outside the museum and explore the harbour – both above and below. There are amazing hidden creatures, fascinating historic objects you can actually touch and ships to climb aboard and adventure in! Here's some of the things you might find ...

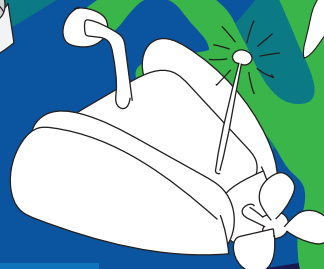
WEEDY SEADRAGON



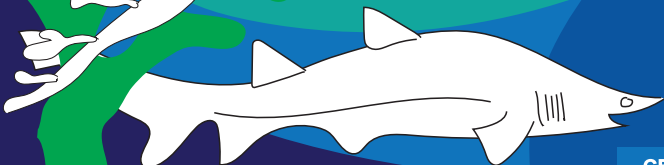
BLUE GROPER



UNDERWATER DRONE



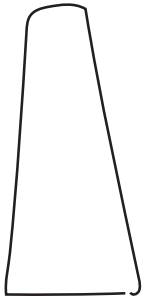
GREY NURSE SHARK



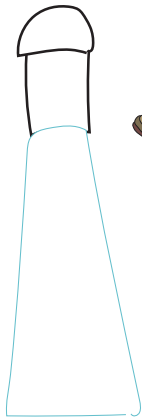
# How to draw a lighthouse

Follow these simple steps

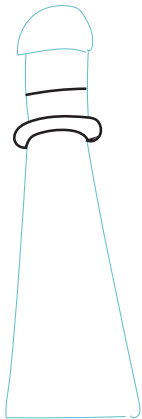
1



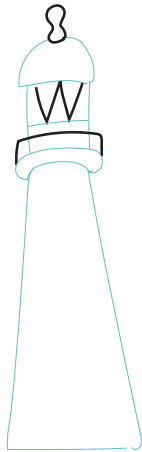
2



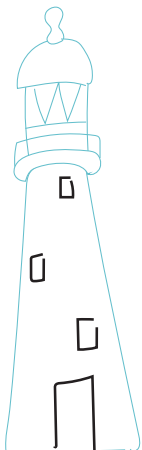
3



4



5



## THE DANCING LIGHTHOUSE...

The Cape Bowling Green Lighthouse is one of the biggest objects that has ever been transported to the museum. Cape Bowling Green is a sandy spit up near Cooktown in Queensland, with the lighthouse built in 1874 to assist vessels travelling to the Great Barrier Reef. The lighthouse had to be moved and rebuilt several times due to the shifting coastline. The former lighthouse keeper said the tower used to 'dance' in stormy weather because of its unstable foundations.

## MAKE A STORY



Make up your own story about a lighthouse here by finishing these sentences.....

Once upon a time...

And every day...

But, one day...

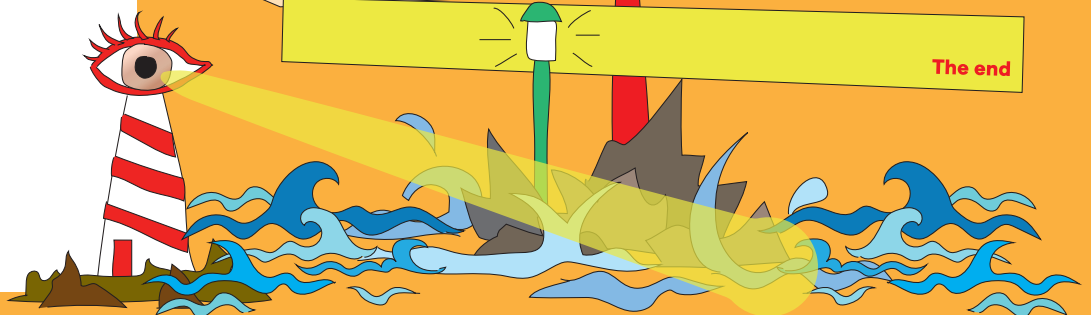
Because of that...

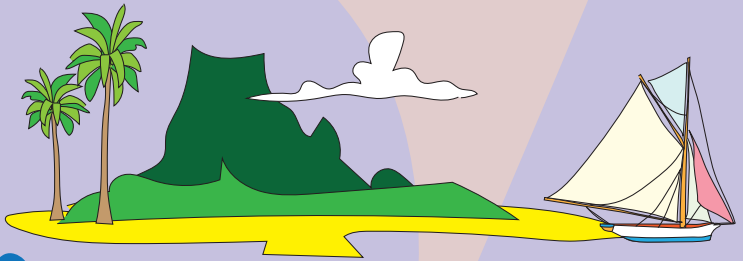
Because of that...

Until finally...

And, ever since then,...

The end





Find the words below.

They could be backwards, forwards, diagonal or downwards.

**Lighthouse**

**Lightship**

**Ferry**

**Steam yacht**

**Motor launch**

**Tug boat**

**Boatswain**

**Helmsman**

**Passenger**

**Captain**

**Dinghy**

**Crew**

**Steam**

**Skipper**

**Sloop**

**Pearling Lugger**

**Schooner**

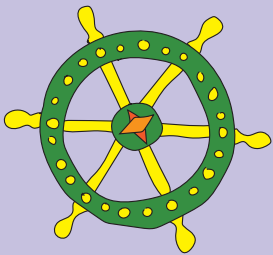
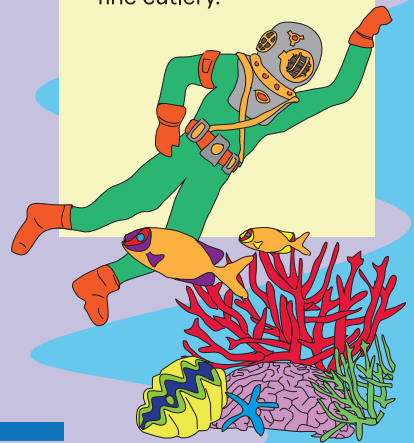
**Shipmate**

**Harbour**

D G O O S R E A C E S H I P M A T E  
 P I Q L U T O D L L T R E E T D E R  
 Q U N I F G E L E R E P P I K S B O  
 C H O G U Y L A R E A I G S S Y O Z  
 P X D H H Y N A M S M L E H H K A O  
 A Y W T O Y E O T Y C L O B E P T S  
 S S R H E C I I Y T A O B G U T S M  
 S H M O T O R L A U N C H Z E N W U  
 E A C U I A L E W Y P R H T S S A Y  
 N R F S C S B B W P I H S T H G I L  
 G B P E A R L L U G G E R B X L N Z  
 E O X Z R I R O K E A V J P E A E Z  
 R U R T A R Q U O Y R P W H Y A Y P  
 S R E S S T Y C A P T A I N U Q U O  
 N N R M S C H O O N E R S M I W Y U

**Did you know?**

Pearling luggers like *John Louis* used to be used for pearl shell diving. Divers worked in hard-hat suits with heavy metal helmets and boots and the work was very dangerous. The Mother of Pearl shell they collected used to be in high demand for use in jewellery, buttons and fine cutlery.



**MEET THE FLEET**

Can you match each vessel to its description?

? **VESSEL TYPE:** Lightship  
**BUILT:** 1916 at Cockatoo Island, NSW  
**STORY:** I used to live in the sea off the Gulf of Carpentaria. My gas-powered light and bell helped keep ships safe from submerged reefs and shoals. You won't see any of my kind at sea anymore as we've been replaced by maritime buoys.

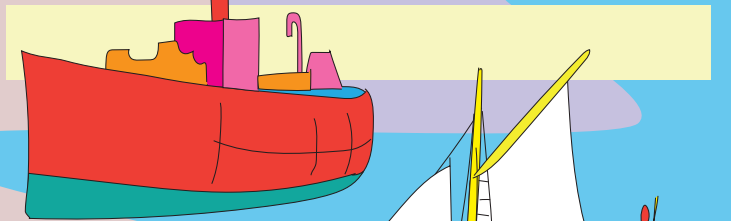
? **VESSEL TYPE:** Pearling Lugger  
**BUILT:** 1957 at Broome, WA  
**STORY:** During my working life I was used by crews to go diving for pearl shells. I have a special tank of circulating sea water to keep shells alive after they've been collected.

? **VESSEL TYPE:** Drednet Fishing Boat  
**BUILT:** 1975, Phu Quoc, Vietnam  
**STORY:** My name means Freedom. I may be a simple fishing boat but I was used to carry 31 refugees from Vietnam to a new life in Australia in 1977.

MY NAME IS:



MY NAME IS:



MY NAME IS:










# SEAGULL CHASE

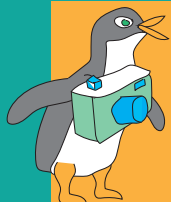
Bailey is the museum's Director of Seagulls, taking daily patrols to help keep seagulls (and their droppings) away from the wharves and vessels.

## HIDDEN CREATURES

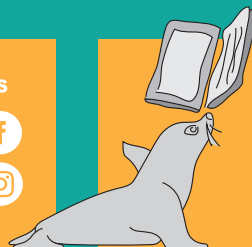
Did you know all these amazing creatures live in parts of Sydney Harbour? Some of them have even been spotted in the harbour at the museum. See how many you can spot here....



- 
- 
- 
- 
- 



Share your creations with us  
[web@sea.museum](mailto:web@sea.museum)  
[@sea.museum](https://www.instagram.com/sea.museum)  
[#seamuseumkids](https://www.instagram.com/sea.museum/kids)



More activities to create at home  
 Download our printable templates for more creative activities on the website at [sea.museum/kidscraft](http://sea.museum/kidscraft)



More things to do at the museum  
 Visit the museum to enjoy our spring programs and exhibitions  
[sea.museum/kids](http://sea.museum/kids)