

Signals
Activities

AUSTRALIAN
NATIONAL
MARITIME
MUSEUM

KIDS

Let's take an adventure, across the seas, under the stars and around the world. But how could we find our way and keep from getting lost?

Colour in some of the different types of instruments we can use to find our way on a long journey. Some of these were used by European explorers. Some were used by Aboriginal and Torres Strait Islander people.

WINTER 2016

June, July, August

CONSTELLATION

NAWI CANOE

SEXTANT

EXPLORER

COMPASS

MAP

TALL SHIP

LANDMARKS

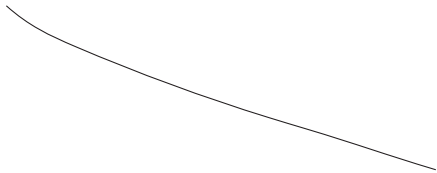
DID YOU KNOW?

A **SONGLINE** is like a map, used by Aboriginal and Torres Strait Islander peoples. Songlines can be in the land, in the water and in the winds. Indigenous people had special ways of reading all of these maps.

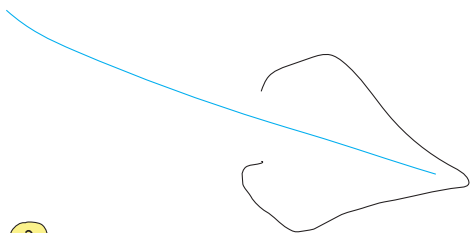
How to draw a SHARK

Follow these simple steps to draw a shovel-nosed shark

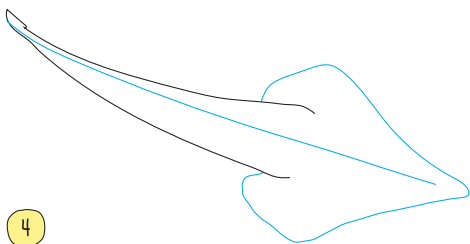
1



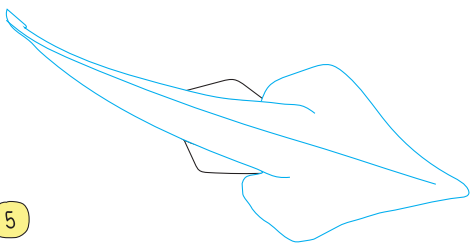
2



3



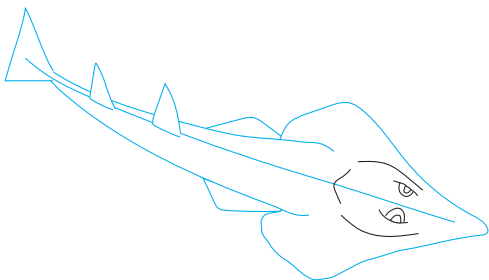
4



5



6



The shovel-nosed shark is associated with the Milky Way galaxy in Torres Strait Islander cultures. See how the shape is similar?

WORD MATCH

Can you match all of these navigational tools to the correct illustrations?

map

dip circle

night sky

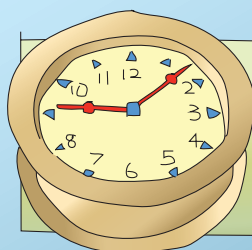
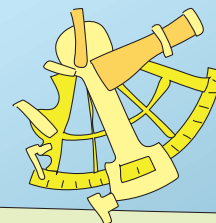
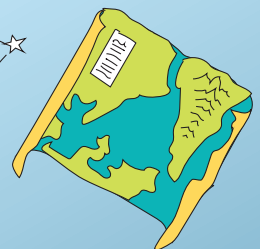
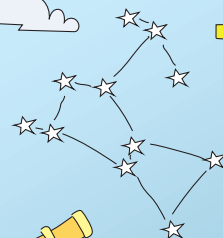
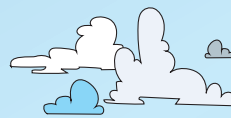
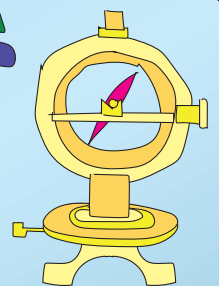
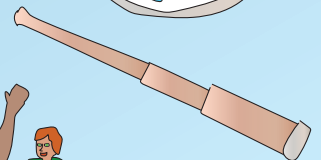
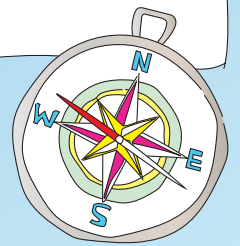
compass

sextant

telescope

a story

cloud formations



The marine timekeeper - a special clock that could keep time at sea - was one of the most important inventions of its time for European explorers. It helped them to find longitude - the distance east or west.

Help this sailor find his island home.



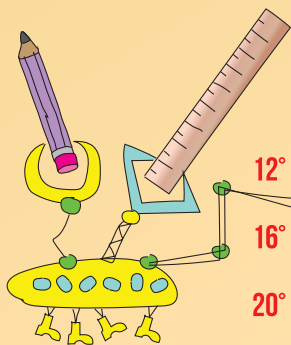
LOST AT SEA

Help this sailor find his ship.

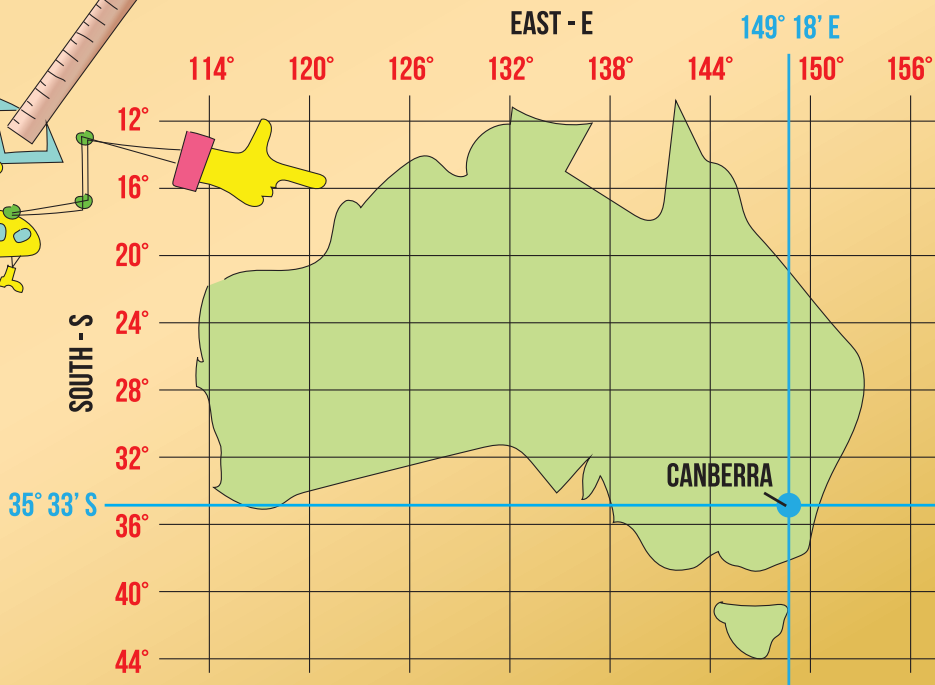


WHERE IN AUSTRALIA

Can you find these cities on the map using their longitude and latitude? We've done the first one for you to show you how.



CANBERRA	35°	33'	S	149°	18'	E
DARWIN	12°	38'	S	130°	88'	E
HOBART	42°	89'	S	147°	35'	E
BRISBANE	27°	29'	S	153°	08'	E
PERTH	31°	92'	S	115°	91'	E
ADELAIDE	34°	55'	S	138°	36'	E
SYDNEY	34°	00'	S	151°	00'	E
MELBOURNE	37°	47'	S	144°	58'	E



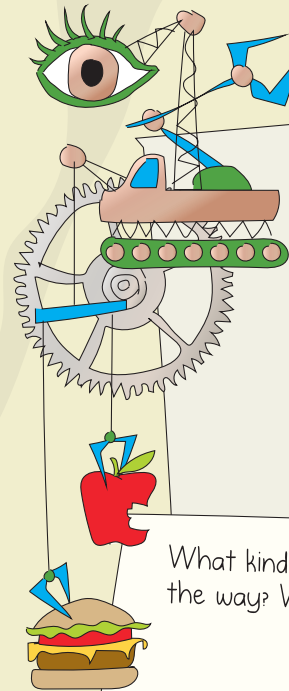
Invent your own **EXPLORER'S MAP**

MY MAP OF

Imagine you are taking a journey. Maybe it is a journey around your house, to another neighbourhood or to a distant place – over seas or in the sky.

Draw a map showing the way.

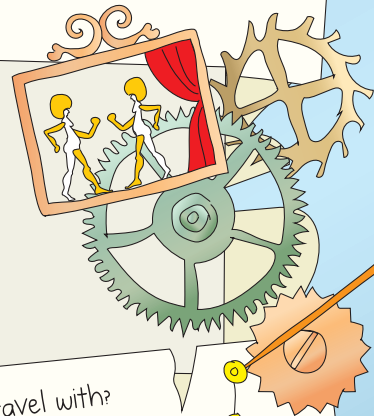
Are there any landmarks you would include? Perhaps a lounge chair, a mountain range, a star formation.



What kind of tools or super machines would you use to find your way around?

What kind of food would you eat along the way? Where could you find food?

What kind of entertainment or activities would you enjoy along the way?



Who would you travel with?

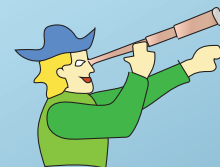


**Share your
creations
with us**



**More activities
to create
at home**

Download our printable templates for more creative activities on the website at www.anmm.gov.au/kidscraft



**More things to
do at the
museum**

Visit the museum to enjoy our winter programs and exhibitions www.anmm.gov.au/kids

web@anmm.gov.au

  @ANMMuseum #anmmkids